

Applicable models:

Europe models – FZ-F1BFC series and FZ-F1BFL series

North America models – FZ-F1BCC series (Wi-Fi only)

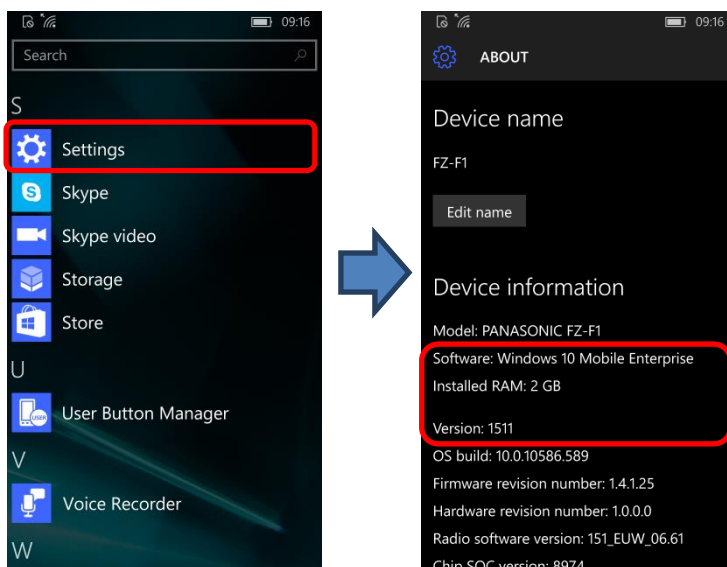
This document describes how to upgrade the OS from Version 1511 (November Update) to Version 1703 (Creators Update) for Windows 10 IoT Mobile Enterprise.

Prerequisites

- Do not turn off the unit nor remove the battery while downloading updates or updating the software.
- The date and time should be set correctly.
- The battery should be fully charged and the unit should be connected to a charger.
- There should be approximately 2 GB of storage available on the unit.
- Check the software version of the unit.

[STEP1]

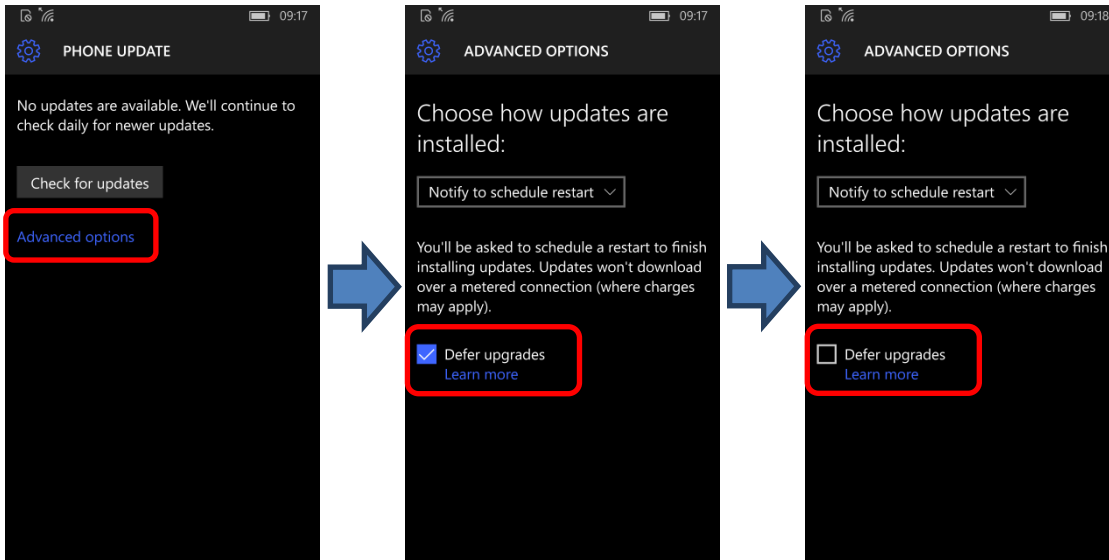
From the Start screen, tap **[App list]** → **[Settings]**→**[System]**→**[About]**, and confirm that the software version is **“Windows 10 Mobile Enterprise Version 1511”**.



Prerequisites

[STEP2]

Tap [App list]→ [Settings]→ [Update & security] →[Phone update]→ [Advanced options], and deselect [Defer upgrades].

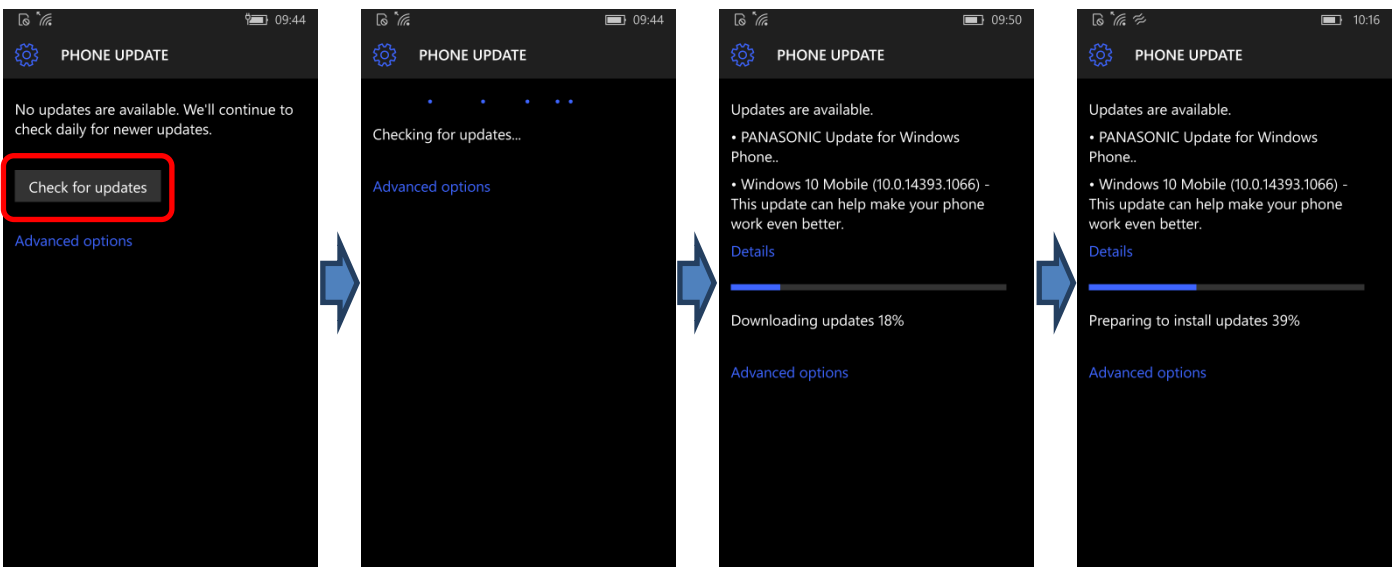


To upgrade to Windows 10 IoT Mobile Enterprise Version 1703 from Version 1511, first upgrade to Version 1607, and then upgrade to Version 1703. Furthermore, update to the latest version of Windows 10 IoT Mobile Enterprise Version 1703 and firmware. Windows update is required three times to complete updating.

The following steps are required to upgrade the OS.

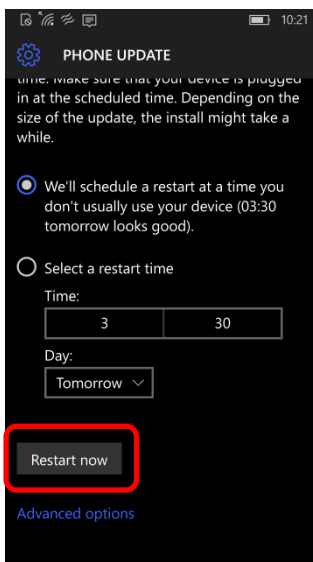
[STEP3]

Tap [App list]→[Settings]→[Update & security] →[Phone update]→[Check for updates].



[STEP4]

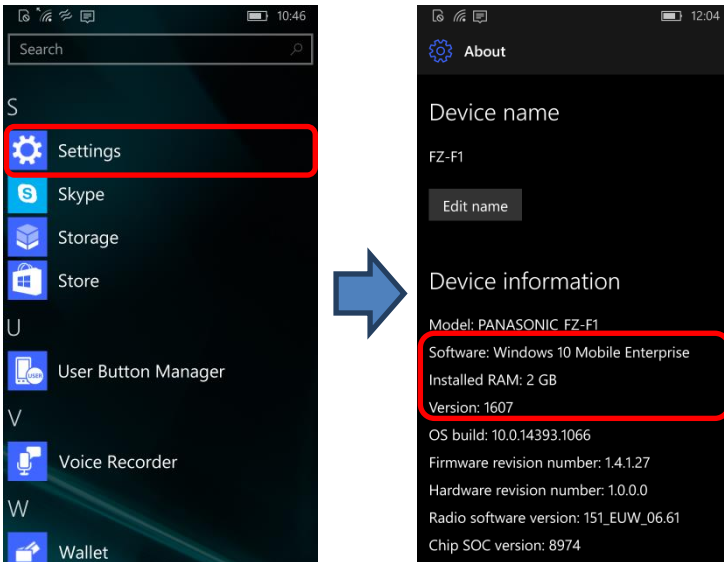
Tap [Restart now] to start the installation, and wait until the update is done.



Upgrade to Windows 10 IoT Mobile Enterprise Version 1607

[STEP5]

After you update the OS and restart the unit, tap **[App list]** → **[Settings]** → **[System]** → **[About]**, and confirm that the software version is **“Windows 10 Mobile Enterprise Version 1607”**.



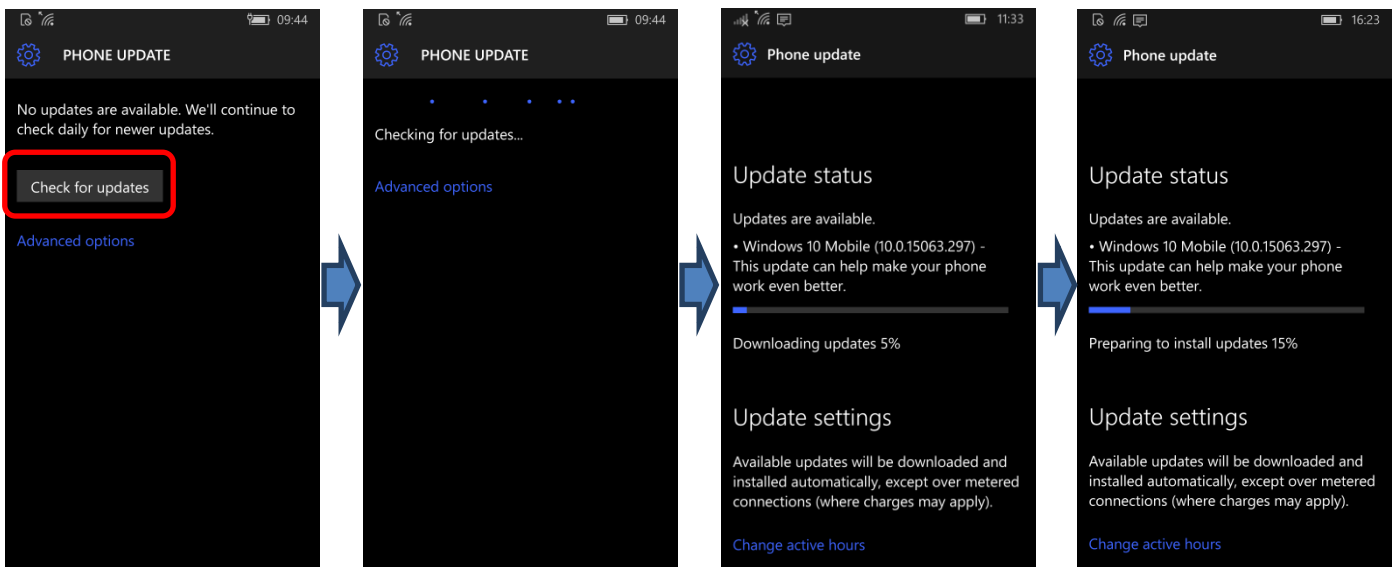
Note

- The OS is updated to Windows 10 IoT Mobile Enterprise Version 1607 using the steps above.
- **You must update to Version 1703 with the following steps.**

Upgrade to Windows 10 IoT Mobile Enterprise Version 1703

[STEP6]

Tap [App list]→[Settings]→[Update & security] →[Phone update]→[Check for updates].

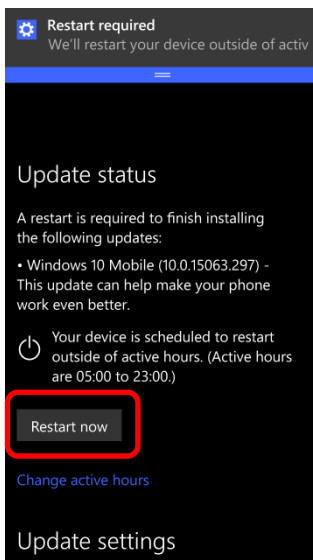


Note

- [Check for updates] may start automatically if the unit is connected to the Internet.

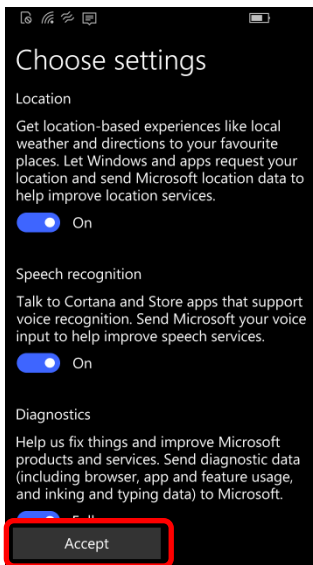
[STEP7]

Tap [Restart now] to start the installation, and wait until the update is done.



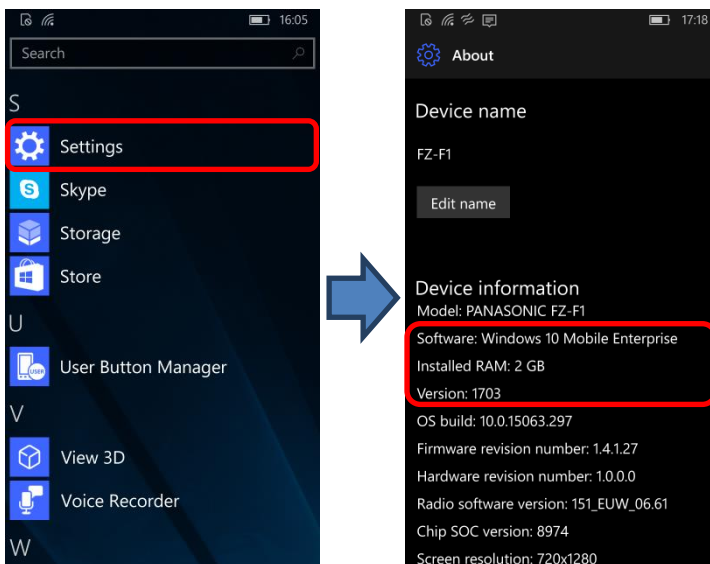
[STEP8]

After you update the OS and restart the unit, the **[Choose settings]** screen will be displayed. Choose your desired settings, and tap **[Accept]**.



[STEP9]

Tap **[App list]** → **[Settings]** → **[System]** → **[About]**, and confirm that the software version is **“Windows 10 Mobile Enterprise Version 1703”**.



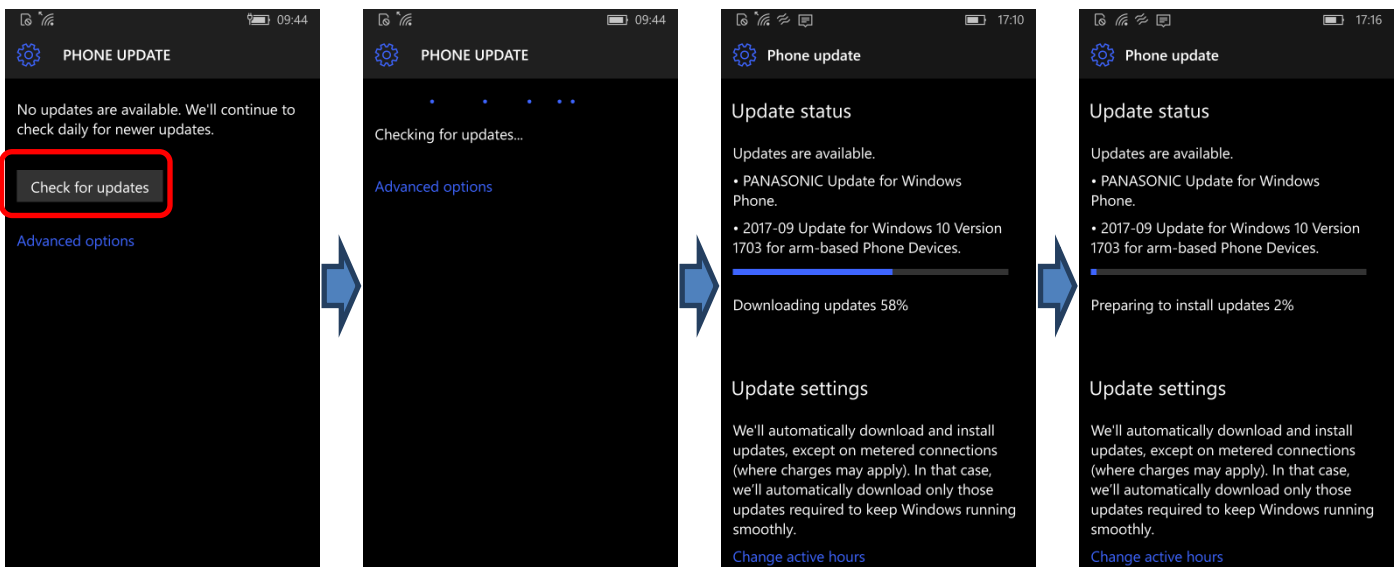
Note

- Although the OS is updated to Windows 10 IoT Mobile Enterprise Version 1703 using the steps above, it is not the latest version of Version 1703 and firmware.
- **You must update to the latest version of OS and firmware with the following steps.**

Updating the version of the unit

[STEP10]

Tap **[App list]**→**[Settings]**→**[Update & security]** →**[Phone update]**→**[Check for updates]**.

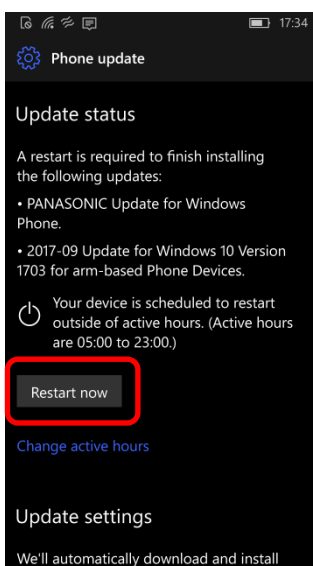


Note

- **[Check for updates]** may start automatically if the unit is connected to the Internet.

[STEP11]

Tap **[Restart now]** to start the installation, and wait until the update is done.



Updating the version of the unit

[STEP12]

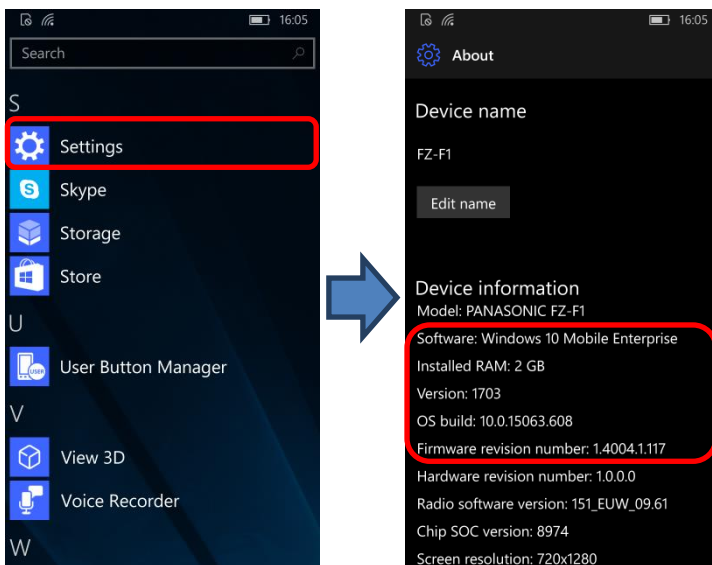
After you update the OS and restart the unit, tap **[App list]** → **[Settings]** → **[System]** → **[About]**, and confirm that the software versions are **“Windows 10 Mobile Enterprise Version 1703”** and **“OS build: 10.0.15063.608 or later”**.

Confirm that the Firmware revision number is as follows.

[Firmware revision number]

Europe models – FZ-F1BFC series and FZ-F1BFL series: **1.4004.1.117 or later**

North America models – FZ-F1BCC series (Wi-Fi only): **1.4002.2.103 or later**



Note

- *Some settings will be reset after upgrading. Check your settings and configure them again as necessary.*