

Applicable models:

- Europe models – FZ-F1BFC series and FZ-F1BFL series
- Australia / New Zealand models – FZ-F1BLC series
- North America models (Wi-Fi Only) – FZ-F1BCC series

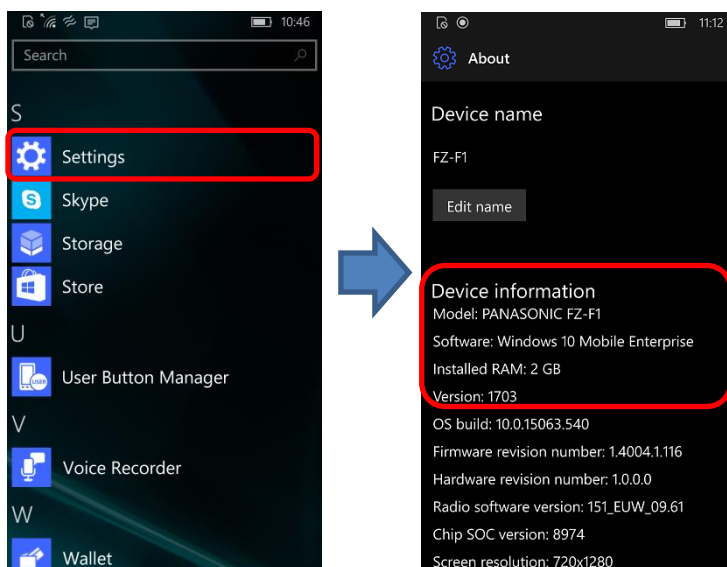
This document describes how to upgrade the OS from Version 1703 (Creators Update) to Version 1709 (Fall Creators Update) for Windows 10 IoT Mobile Enterprise.

Prerequisites

- Do not turn off the unit nor remove the battery while downloading updates or updating the software.
- The date and time should be set correctly.
- The battery should be fully charged and the unit should be connected to a charger.
- There should be approximately 2 GB of storage available on the unit.
- Check the software version of the unit.

[STEP1]

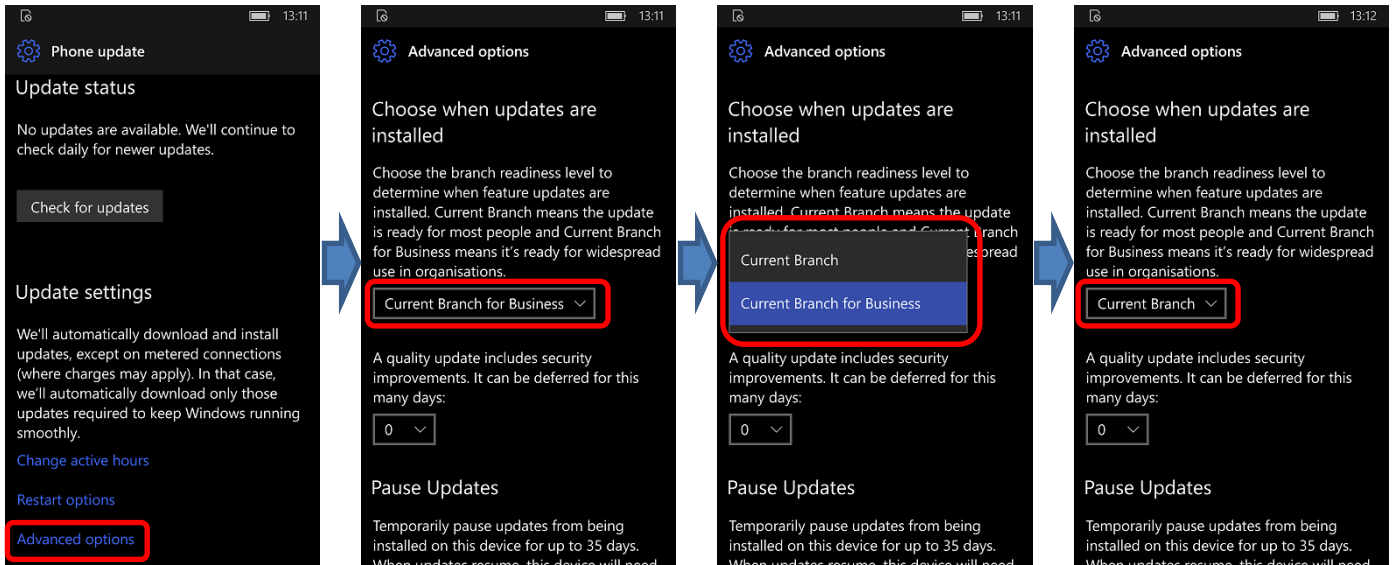
From the Start screen, tap **[App list]** → **[Settings]**→**[System]**→**[About]**, and confirm that the software version is **“Windows 10 Mobile Enterprise Version 1703”**.



Prerequisites

[STEP2]

Tap [App list]→ [Settings]→ [Update & security] →[Phone update]→ [Advanced options], and change from [Current Branch for Business] to [Current Branch] in “Choose when updates are installed”.

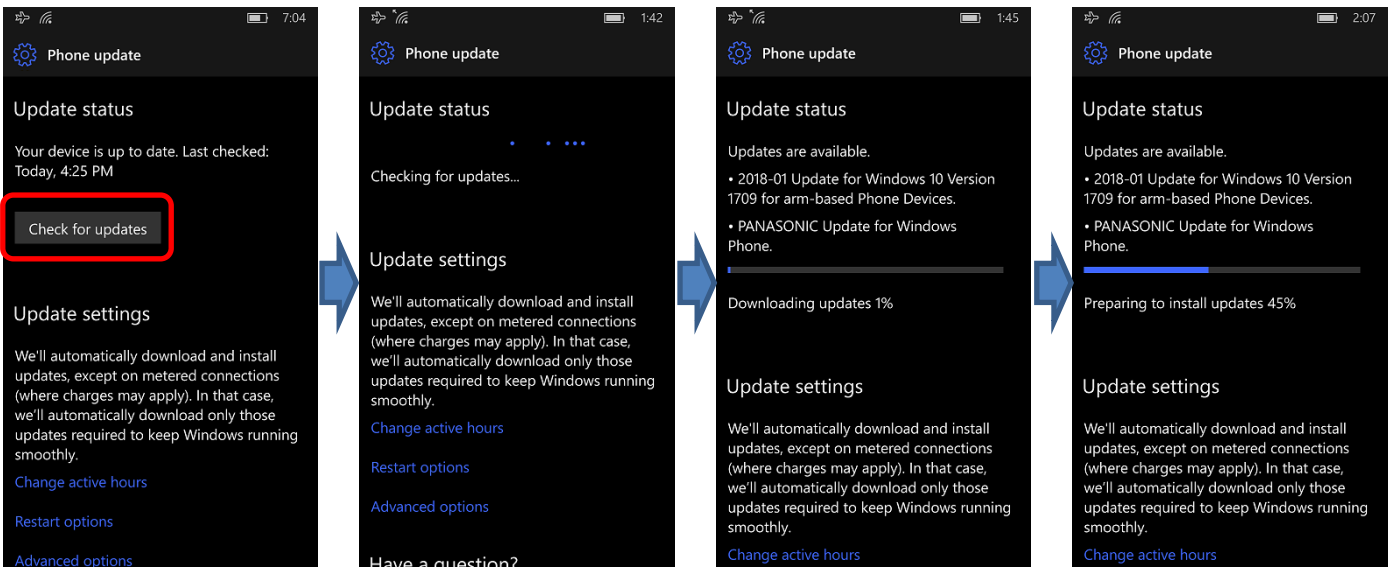


To upgrade to Windows 10 IoT Mobile Enterprise Version 1709 from Version 1703, first upgrade to Version 1709. Furthermore, update to the latest version of Windows 10 IoT Mobile Enterprise Version 1709. The following steps are required to upgrade the OS.

Upgrade to Windows 10 IoT Mobile Enterprise Version 1709

[STEP3]

Tap **[App list]**→**[Settings]**→**[Update & security]** →**[Phone update]**→**[Check for updates]**.

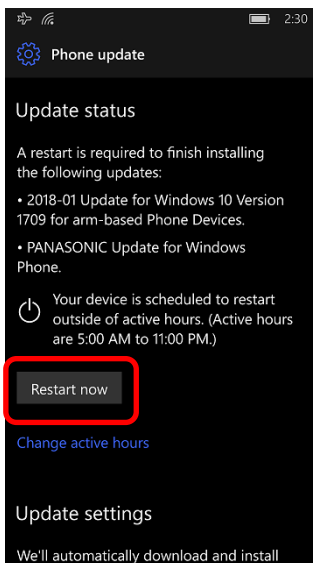


Note

- *[Check for updates] may start automatically if the unit is connected to the Internet.*

[STEP4]

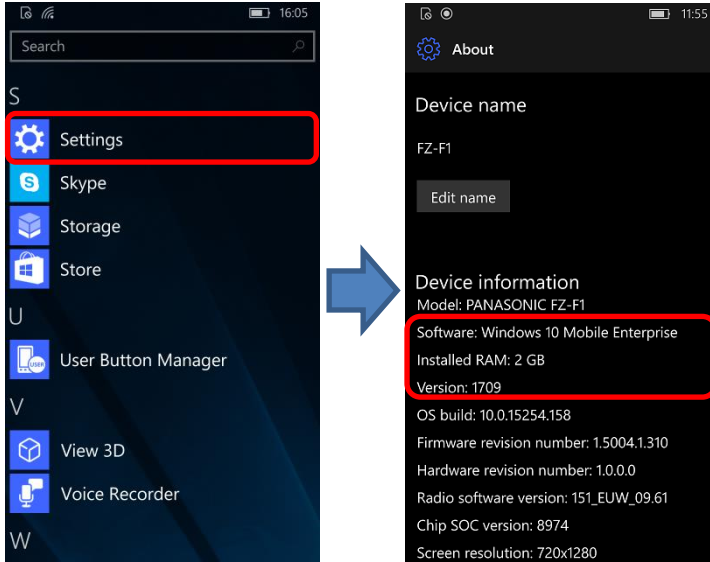
Tap **[Restart now]** to start the installation, and wait until the update is done.



Upgrade to Windows 10 IoT Mobile Enterprise Version 1709

[STEP5]

Tap [App list] → [Settings] → [System] → [About], and confirm that the software version is “**Windows 10 Mobile Enterprise Version 1709**”.



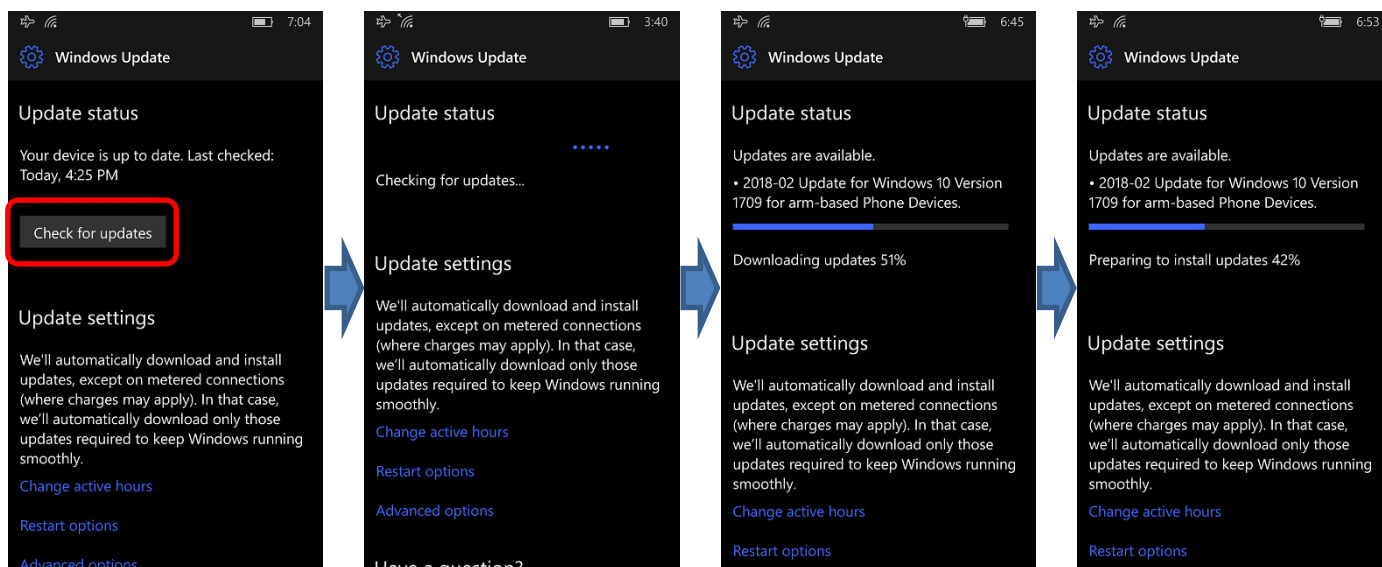
Note

- Although the OS is updated to Windows 10 IoT Mobile Enterprise Version 1709 using the steps above, it is not the latest version of Version 1709.
- **You must update to the latest version of OS with the following steps.**

Updating the version of the unit

[STEP6]

Tap **[App list]**→**[Settings]**→**[Update & security]** →**[Windows Update]**→**[Check for updates]**.

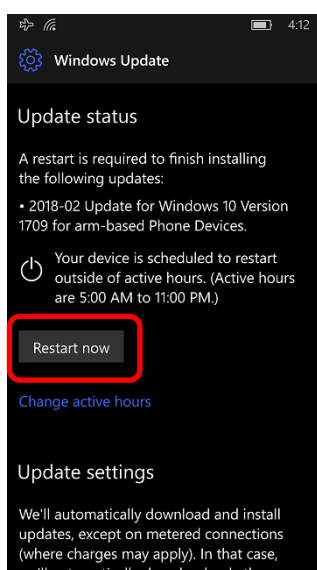


Note

- **[Check for updates]** may start automatically if the unit is connected to the Internet.

[STEP7]

Tap **[Restart now]** to start the installation, and wait until the update is done.



Updating the version of the unit

[STEP8]

After you update the OS and restart the unit, tap **[App list]** → **[Settings]** → **[System]** → **[About]**, and confirm that the software versions are “**Windows 10 Mobile Enterprise Version 1709**” and “**OS build: 10.0.15254.248 or later**”.

Confirm that the Firmware revision number is as follows.

[Firmware revision number]

Europe models

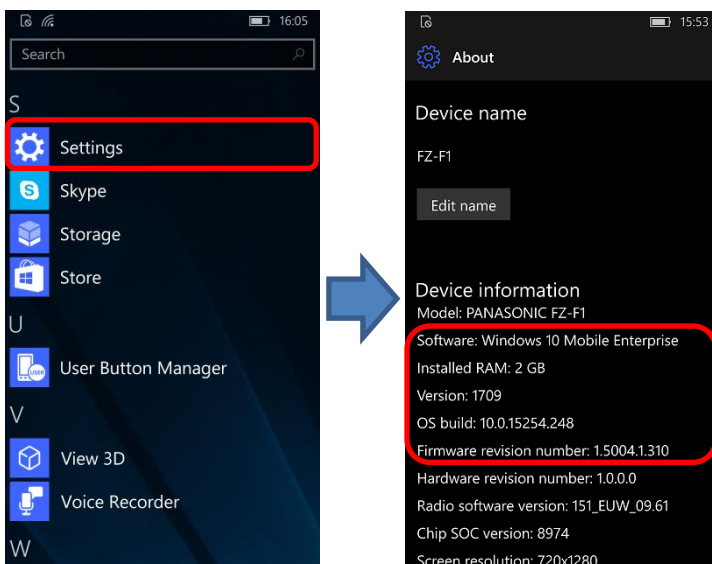
– FZ-F1BFC series and FZ-F1BFL series: **1.5004.1.310 or later**

Australia / New Zealand models

– FZ-F1BLC series: **1.5004.1.310 or later**

North America models (Wi-Fi Only)

– FZ-F1BCC series: **1.5002.2.308 or later**



Note

- *Some settings will be reset after upgrading. Check your settings and configure them again as necessary.*