

FZ-E1 Software Update Procedure (OS Update)

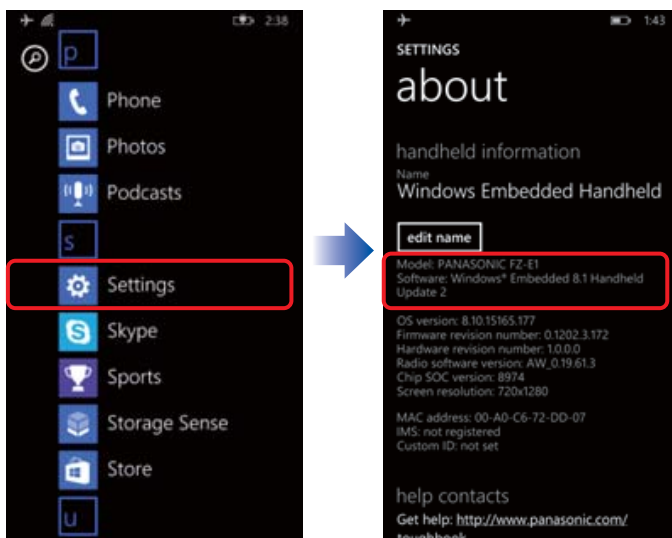
Prerequisites

Applicable models: FZ-E1BFC, FZ-E1BBC, and FZ-E1BCC series models.

- Do not turn off the unit nor remove the battery while downloading updates or updating the software.
- The date and time should be set correctly.
- The battery should be fully charged and the unit should be connected to a charger.
- There should be approximately 2 GB of storage available on the unit.
- Check the software version of the unit.

[STEP1]

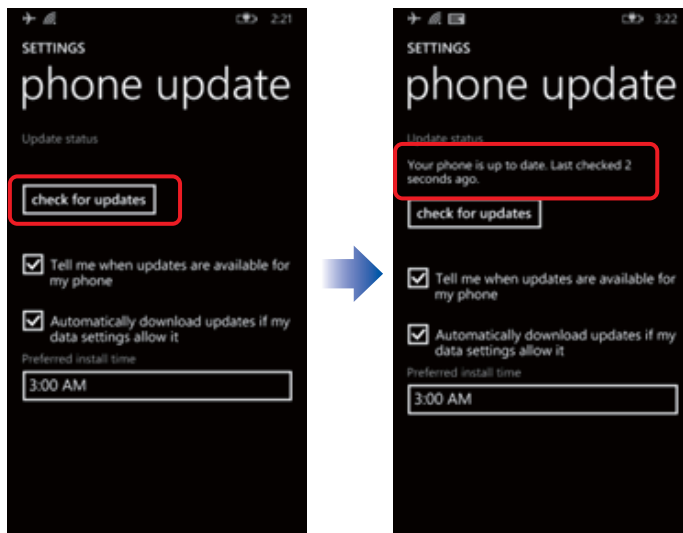
From the Start screen, tap **[App list]** → **[Settings]** → **[about]**, and confirm that the software version is **“Windows Embedded 8.1 Handheld Update 2”**.



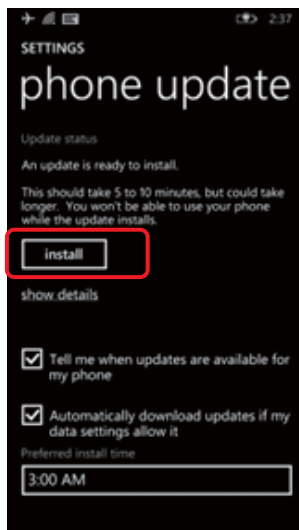
- If the software version is not **Windows Embedded 8.1 Handheld Update 2**, updating is required before updating to the latest version. Even if the software version is **Windows Embedded 8.1 Handheld Update 2**, if the firmware version is old, the unit may not be able to update to **Windows 10 IoT Mobile Enterprise**. Therefore, updating to the latest version of **Windows Embedded 8.1 Handheld Update 2** using the following procedure is recommended.

Tap **[App list]** → **[Settings]** → **[Phone update]** → **[check for updates]** and confirm that **[Your phone is up to date]**.

Prerequisites



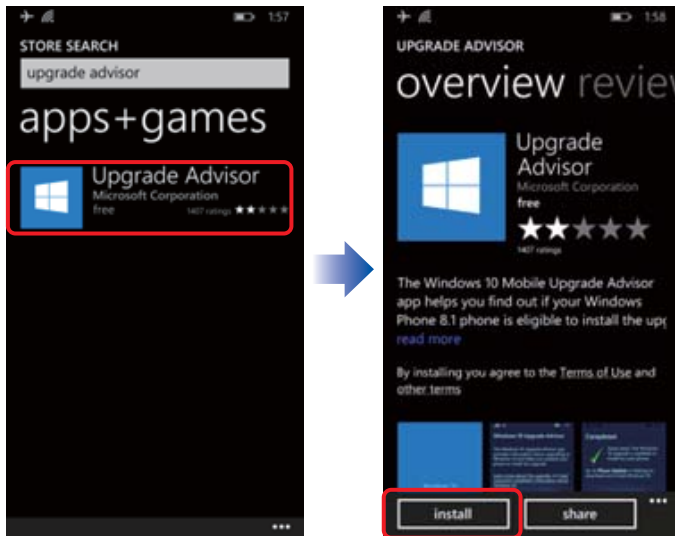
If an update is found, tap **[install]**.



Prerequisites

[STEP2]

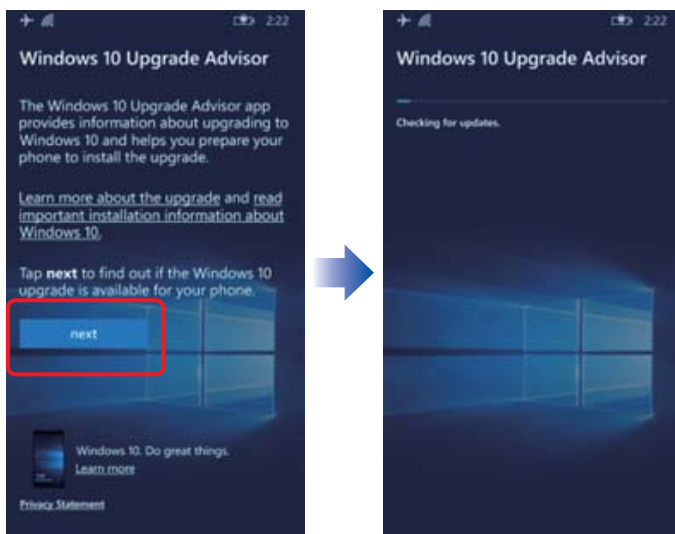
Go back to the app list. Launch **[Store]**, and search for **[Upgrade Advisor]**. Then install the app.



Updating FZ-E1

[STEP3]

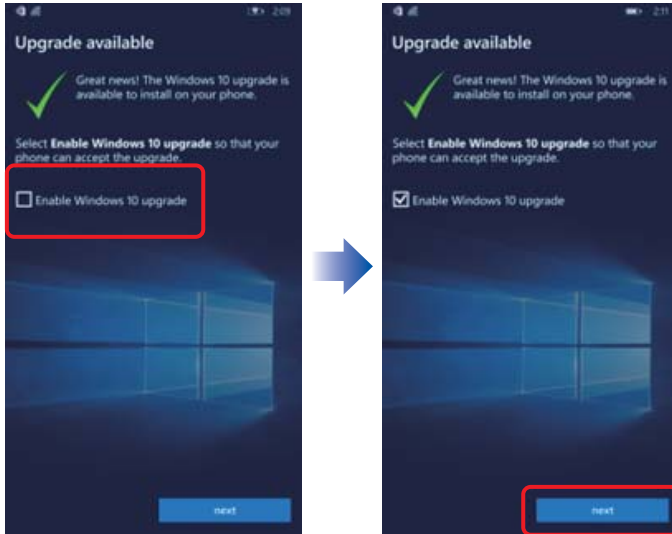
Go back to the app list. Launch **[Update Advisor]**, and tap **[next]** to find out if Windows 10 OS is available.



Updating FZ-E1

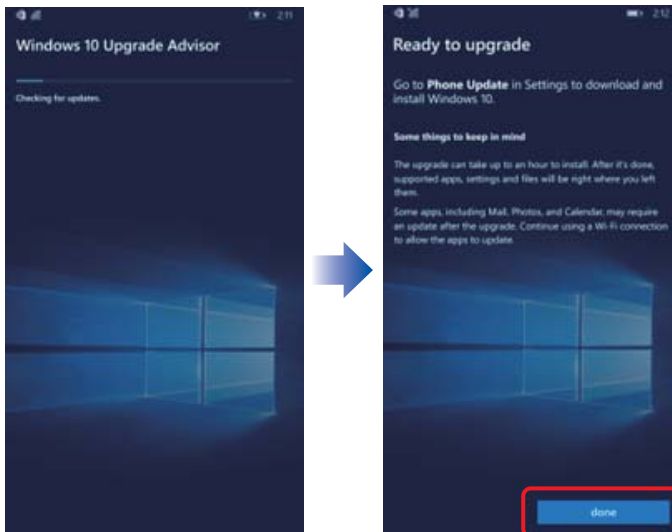
[STEP4]

Select **[Enable Windows 10 upgrade]**, and tap **[next]**.



[STEP5]

Tap **[done]** on the **[Ready to upgrade]** screen.



Updating FZ-E1

[STEP6]

Tap [App list] → [Settings] → [phone update] → [check for updates]. → [install].



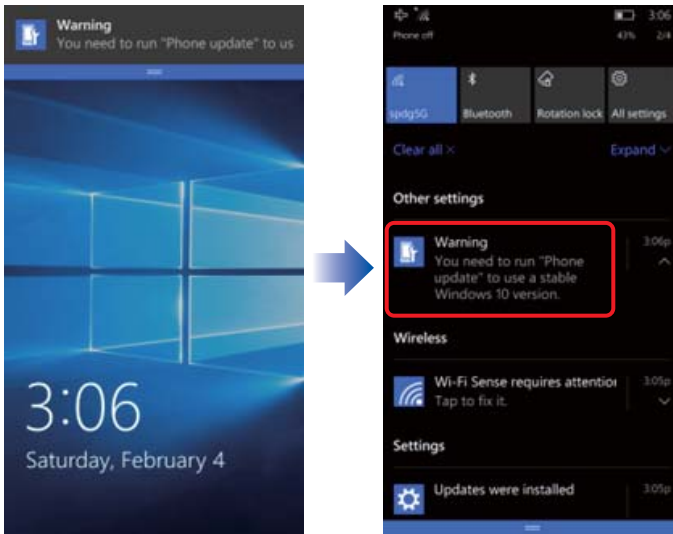
Note

- Although the OS is updated to Windows 10 IoT Mobile Enterprise using the steps above, it may not be the latest version. The following steps are required to use a stable OS version.

Updating the version of the unit

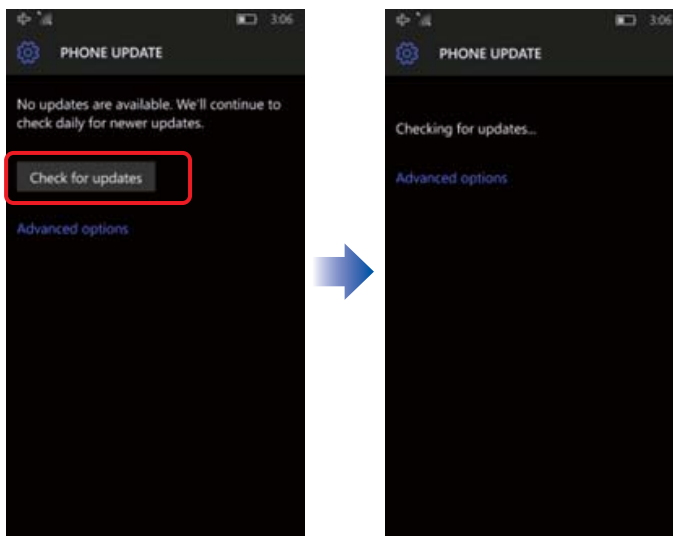
[STEP7]

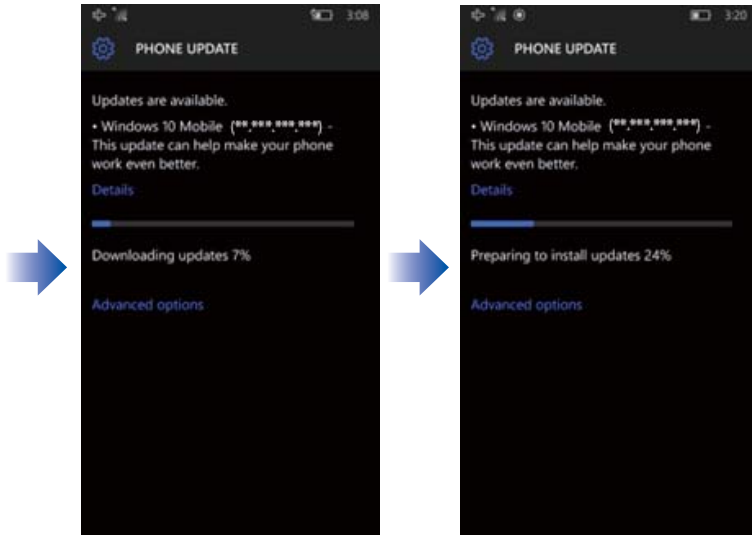
After you update the OS and restart the unit, a warning will be displayed in action center. Tap the warning to launch [Settings] → [Phone update].



[STEP8]

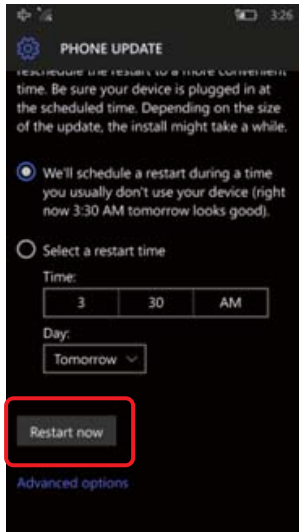
Tap [Check for updates.]





[STEP9]

Tap **[Restart now]** to start the installation, and wait until the update is done.



Note

- Some settings will be reset after upgrading. Check your settings and configure them again as necessary.